



J.K. ASSOCIATES



JK Associates Brochure

Corporate Information

Founded in 1990 in Kathmandu by Mr. Jhanak Datta Khanal, JK Associates (JKA) had a very humble beginning to start. With a secured base of ample qualified engineers and architects, JKA steadily rose into the field of architecture with the help of many national and international clientele.

JKA has the ability to self-perform many aspects of a project, and the financial strength of the entire organization ensures we always perform at our very best. JKA is truly a company of innovators, specialists in the design engineering field, applying cutting-edge technology to provide a competitive advantage to its clientele. It is an engineering and consultancy firm devoted to contributing in Nation building through high levels of specialized performance and dedication, our track record proves it.

Ever since its inception, JKA has been very specific about its quality services, high professional standards and timely performances. We observe all the professional ethics and norms including the applicable ones of those stipulated by the American Society of Civil Engineers (ASCE) and other well-known international association of engineers and scientists.





Our Vision

Architecture and Engineering is not just a practice; it is a method of constructing and molding a path for a better tomorrow. JKA has the experience and expertise to make that possible for our clients. We design and consult with our clients and suggest the best way to transform that vision into reality. Client's satisfaction is our aspiration and we strive to get it done!

Our Mission

“To build a better tomorrow, let's join hands today!” Here at JKA we strive our utmost to meet our client's satisfaction, hence, we are able to perform all the minute details that are usually not foreseen by others. Our tradition of dedication, professionalism and outstanding customer services are a testimony to that mission as we make every effort every day for quality in bringing our valued clients' views to life.

Objectives

- Deliver the project from paper to reality and on the given time-line to our client.
- Provide high quality technical and professional consulting services to different projects.



OUR SERVICES

- Architectural design (Schematic, design development)
- Field survey, mapping and soil investigation
- Detailed structural design including earthquake analysis, live/dead loads and stresses analysis
- MEP Design
- Interior design
- Landscape development
- Preparation of detailed architectural and engineering construction documents and drawings
- Preparation of bill of quantities, rate analysis and cost estimates
- Bid evaluation
- Preparation of tender documents and specification
- Project Management and Construction Supervision
- Project planning and preparation
- Advisory services
- All aspects of project implementation
- Property evaluation
- Contract Administration
- Procuring permits and licenses
- Assessments (feasibility study, pre-investment study, assessment of existing structure for safety, economic assessment and analysis)
- Social and Rural Development (social development, Integrated rural development, rural infrastructure development, natural resource management, community organization, extension, training and development)



OUR CLIENTS



**US Army Corps
of Engineers.**



LINCOLN SCHOOL
KATHMANDU, NEPAL

Dusit Thani

HOTELS & RESORTS



shanker

A Future To Lead





Chetan Gadia Residence, Birgunj, Nepal

Client: Private



JS Residence, Kathmandu Nepal

Client: Private





COMMERCIAL PROJECTS



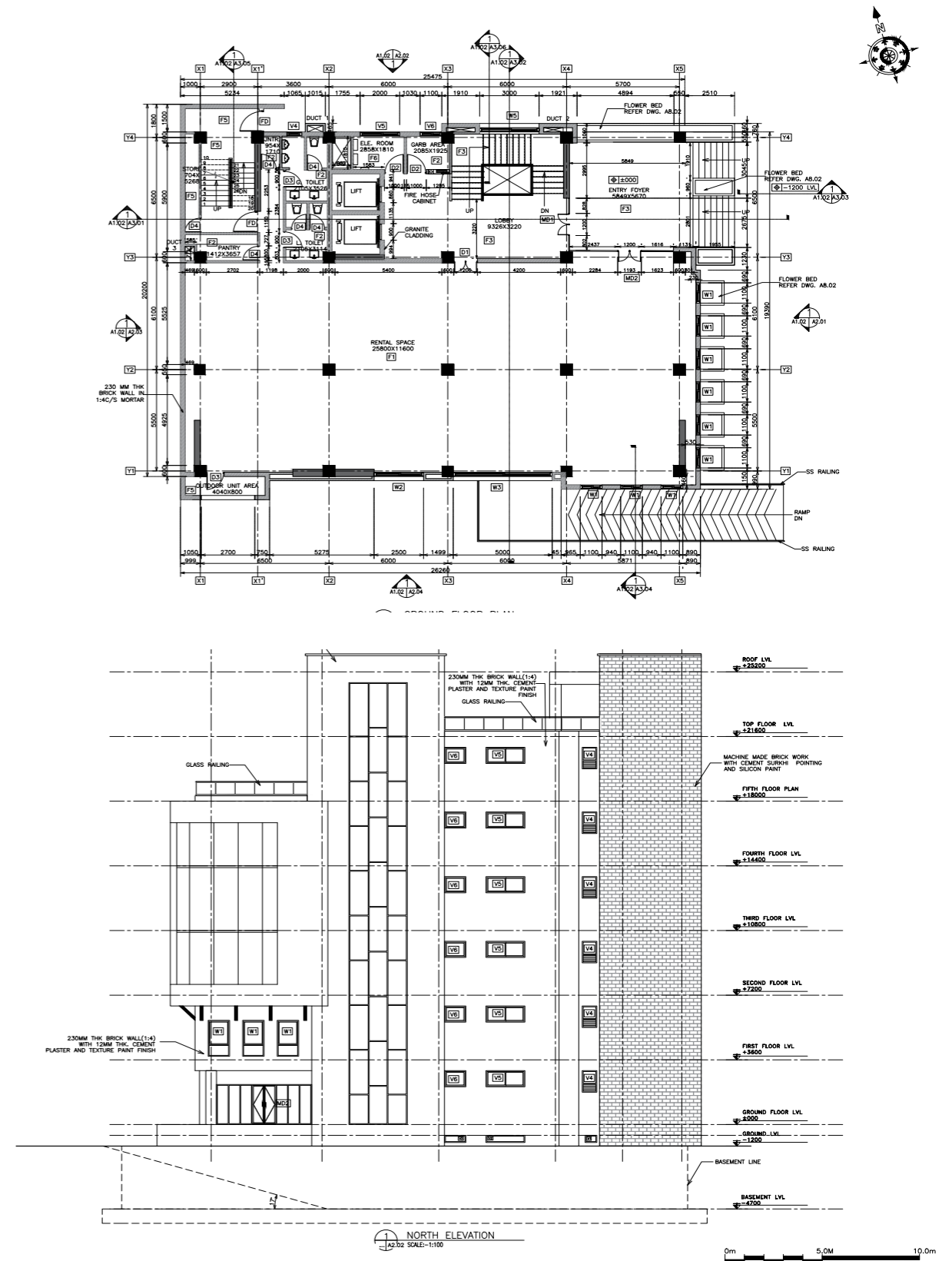
NL Complex, Kathmandu, Nepal

Client: Dr. Sanduk Ruit



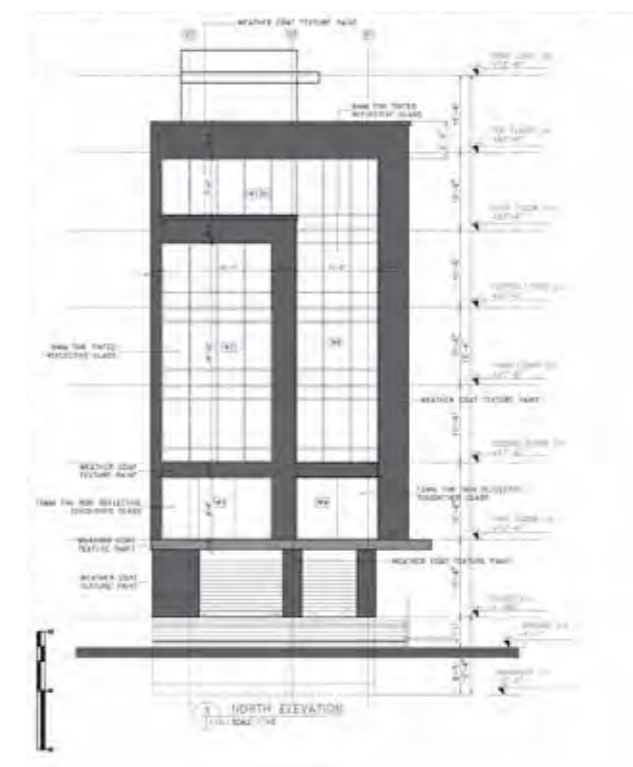
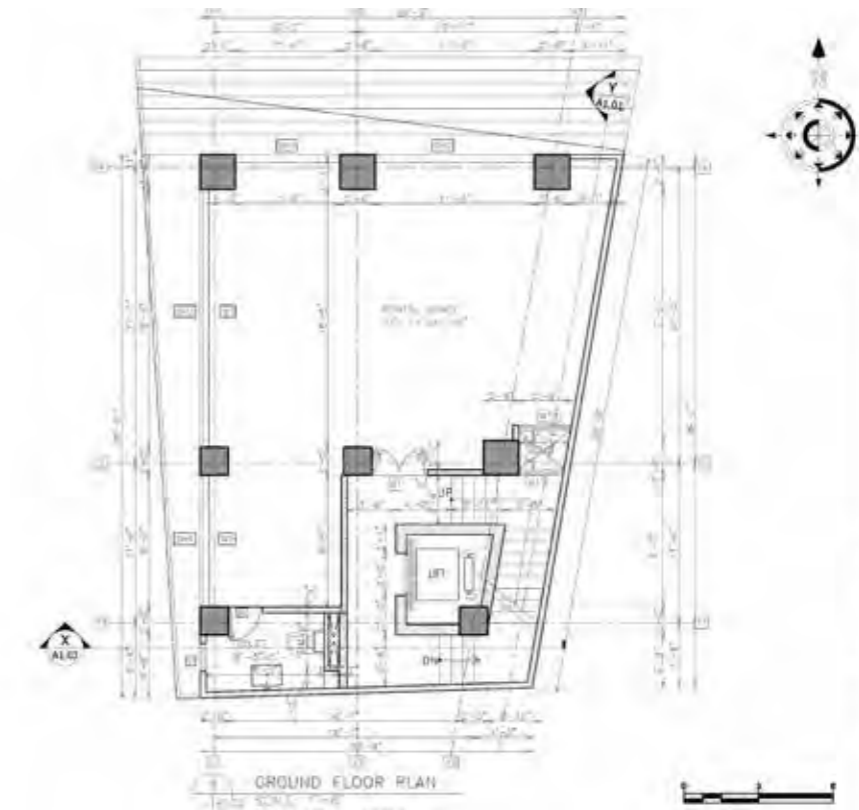
Joshi Tower, Kathmandu, Nepal

Client: Gopal Man Joshi



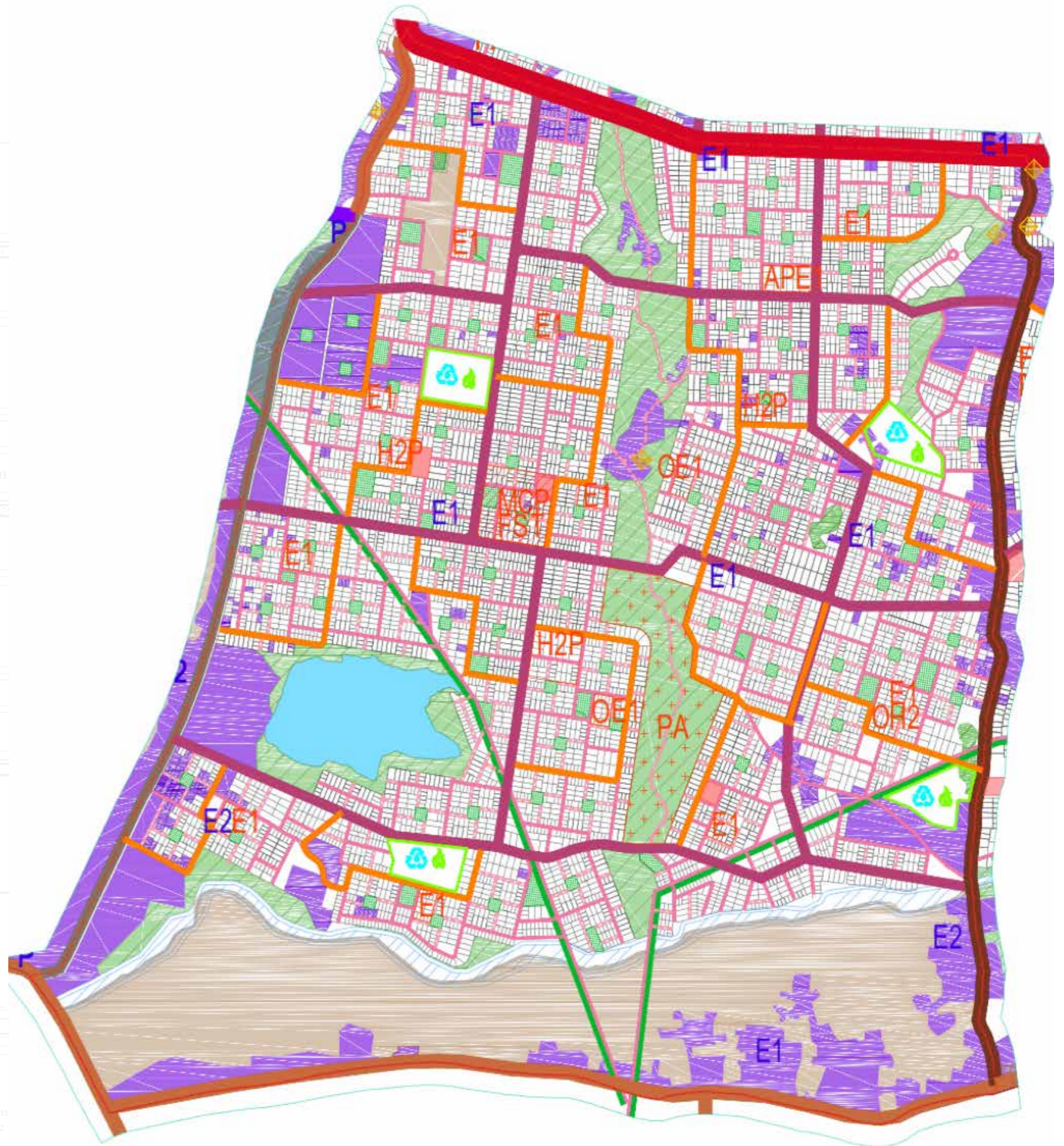
Chandol Commercial and Residential Complex, Kathmandu, Nepal

Client: Ms. Paribhasha Shrestha





MASTERPLANNING PROJECTS

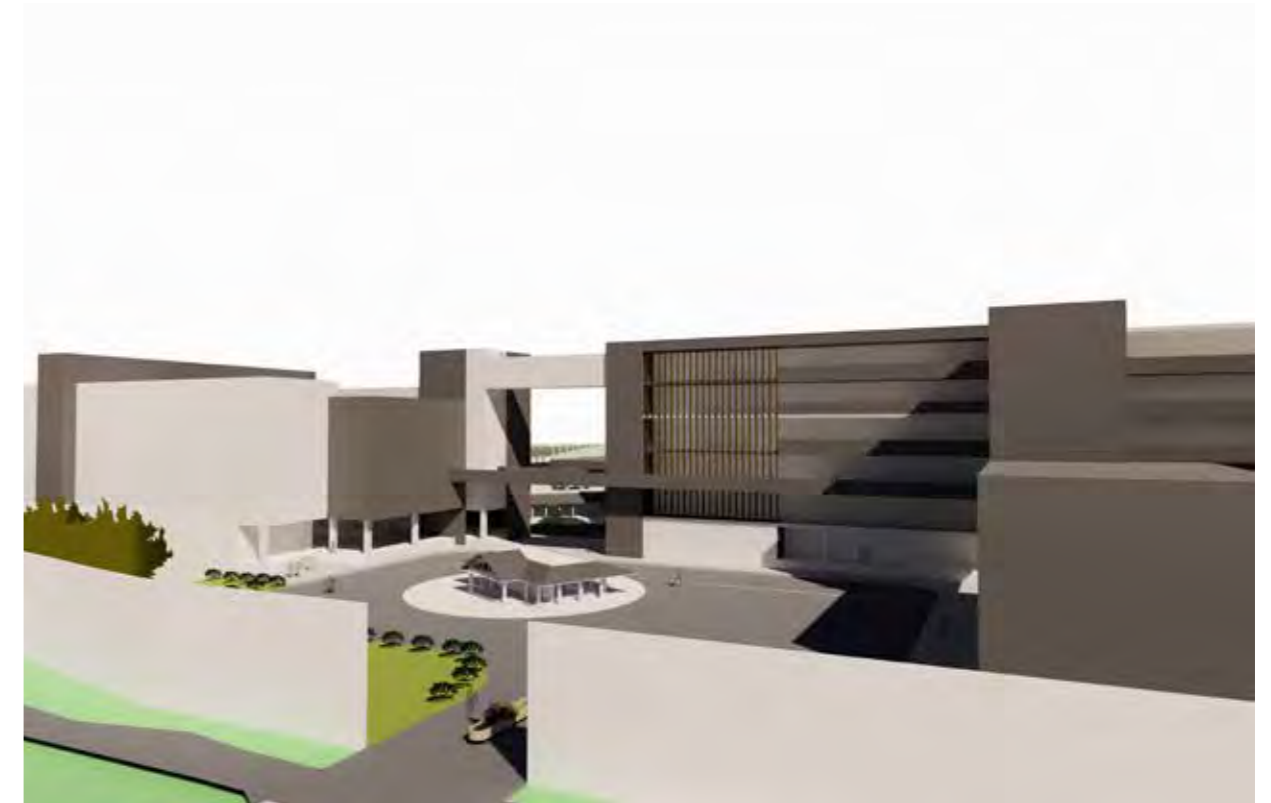


British Grammar School, Pokhara, Nepal

Client: The British College, Nepal



CONCEPTUAL MASTER PLAN
SITE AREA: 25784.87 SQ.M





Smart City, Kathmandu, Nepal in collaboration with Helin & Co
Client: Kathmandu Valley Development Authority
Project Scope: Assements, Survey, Design Development







Prithvi Highway Trauma Center, Nepal

Client: US Army Corps of Engineers, District, Alaska





MULTI-RESIDENTIAL PROJECTS



Himalayan Resort & Spa, Nepal in collaboration with R plus S Company



Client: Dusit Thani

Project Scope: Design Development



International Accommodation Block at BPOTC, Panchkhal, Nepal

Client: NAVFAC ROICC, Thailand



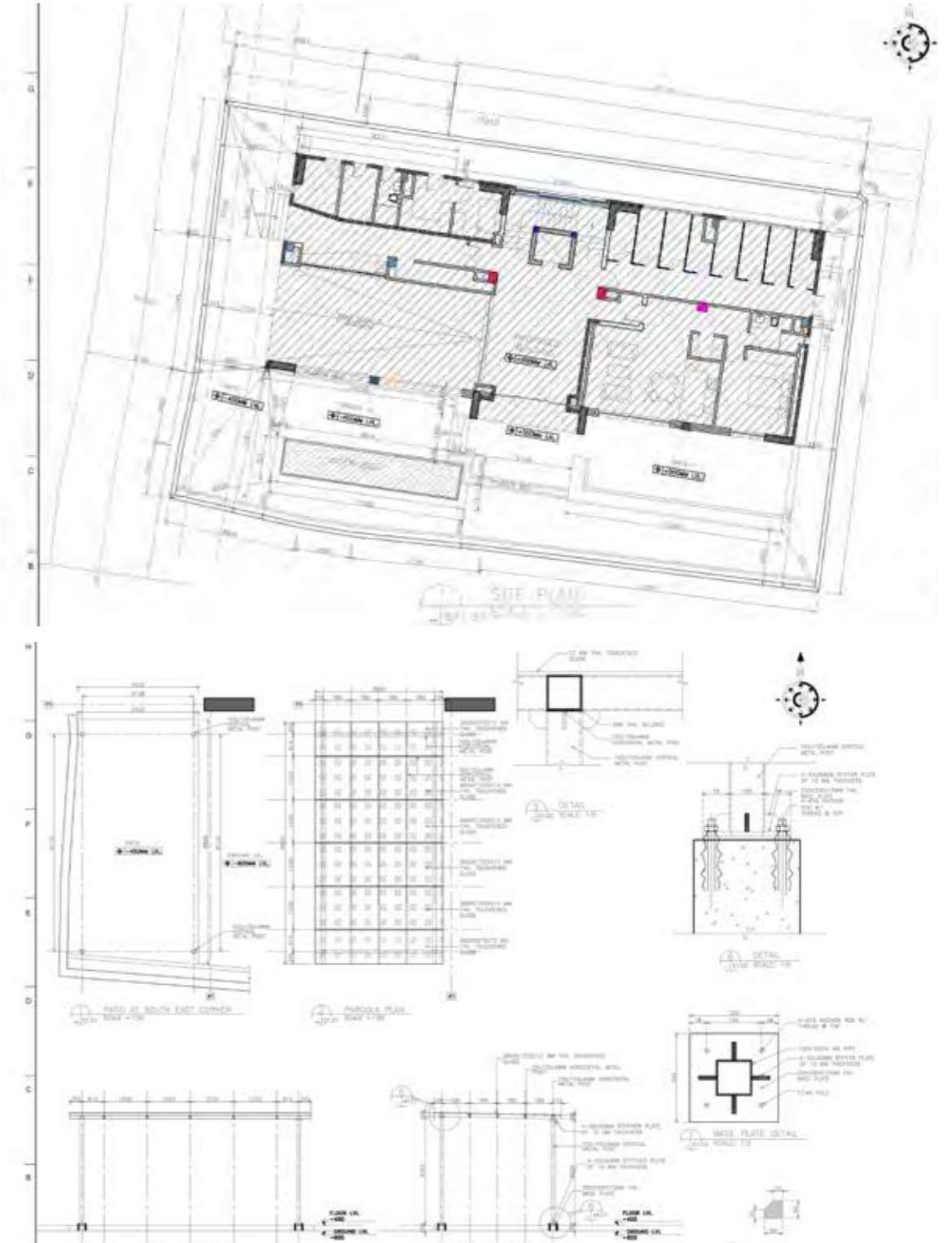
Panipokhari Apartments, Kathmandu, Nepal

Client: Private



Chundevi Apartments, Kathmandu, Nepal

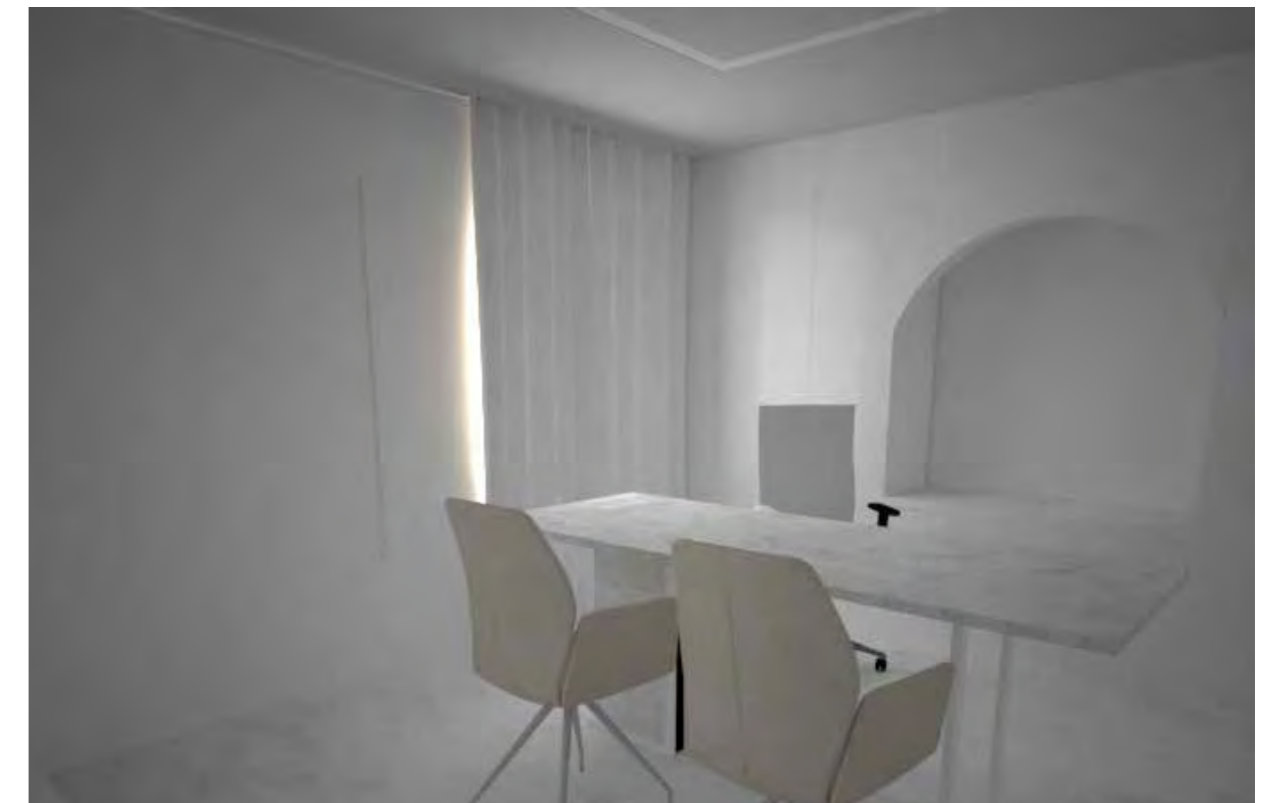
Client: Ms. Hem Kumari Gurung
Project Type: Design Development





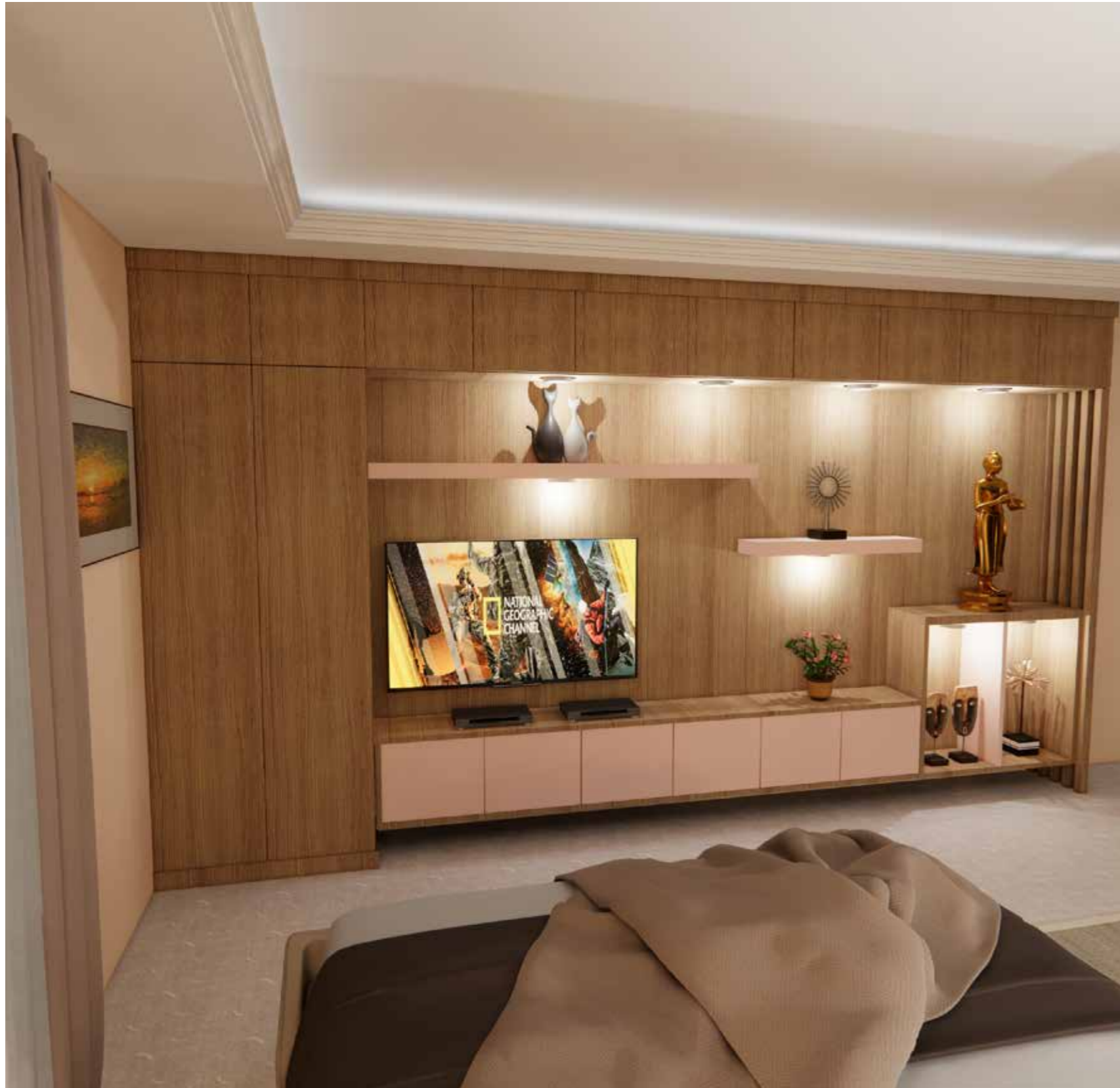
Himalayan Builders Head Office, Kathmandu, Nepal

Client: Himalayan Builders



Residential Interior Design, Kathmandu, Nepal

Client: Private



Tej Kohli & Ruit Foundation, Kathmandu, Nepal

Client: Dr. Sanduk Ruit



Jagadamba Motor Showroom, Kathmandu, Nepal

Client: Shanker Group



KRIMO House, Kathmandu, Nepal

Client: Private





Experiences in seismic assessments:

Back in 2001, the US Department of State, Overseas Building Operations (OBO) hired a Structure Engineer from California to assess the leased buildings occupied by the US Government in this region for earthquake resistance tests. The US Embassy Kathmandu had recommended JKA's capable personnel for training on the said course. Our team took this training and was given detailed guidelines and techniques on earthquake vulnerability and seismic assessments. Following these instructions and guidelines, JKA conducted assessments for the US Missions and USAID leased buildings in Nepal.

Seismic retrofitting projects in the past:

Retrofitting at the US Ambassador's residence "Kamalkunj", Kamaladi, Kathmandu in 1998, and the work consisted of cutting a four-meter wide doorway in an existing load bearing wall. Before beginning the project, we provided a complete set of engineered drawings and calculations that were sent to Washington for review. The Department of State approved our work and was very impressed with our presentation. JKA delivered the completed project in about half the scheduled time.

"Mr. Khanal is not only an excellent engineer, and contractor, but he finds time to personally supervise the project on a daily basis. He has excellent quality control. We have used him for several projects at the American Embassy, and have always been very pleased with his service. We highly recommend him for any type of project, large or small. He takes extreme pride in his work, as well as "Customer satisfaction."

-US Ambassador H.E. Ralph Frank

COMPLETED PROJECTS



S.No	Description	Year of Completion
1	Site Survey, detailed landscaping drawings of recreation center at Godawari, for Mr. Pradeep Agrawal.	1994
2	Site Survey, detailed design of proposed resort with single and double bed room isolated blocks at Janagal, Banepa for Mr. Janak Bista.	1995
3	Site Survey and detailed design of guest blocks at Lamatar, Lalitpur for Mr. K.B. Shah.	1995
4	Detailed design, construction drawings, quantity survey and site supervision of residence building at Maharajganj, for Mr. Yug Bahadur Pokhrel.	1996
5	Project Management for Kitchen and dining room renovation at Phoradurbar Kathmandu, for American Mission Association.	1996
6	Design, detailed construction drawings and Project Management of Nepal SBI Bank extension counter in the premises of the Indian Embassy.	1994
7	Design, detailed construction drawings and Project Management of Interior works for Trade Promotion Center.	1994
8	Design, detailed construction drawings/complete Project Management of changing room block of executive club for Hotel Woodland at Durbar Marg.	1997
9	Design, detailed construction drawings and Project Management of residence building for Mr. Maheshwor Shah at Dhumbarahi.	1998
10	Design and Project Management of parking area pavement including security side-walkways for American Embassy, Panipokhari, Kathmandu.	1995
11	Design and Project Management work for Ambassador's residential office, helper's quarter, kitchen and paving work at Kamal Kunj for American Embassy.	1997
12	Project Management with Washmac (a leading HVAC American Company) as local A/E firm USA Department of State, FBO for Air condition system installation at the US Embassy.	1996
13	Design, detailed construction drawings, and complete Project Management of Concrete paving on parking area about 2000 m2 for the US Embassy, Phora Durbar.	1998
14	Design, detailed construction drawings, and complete project management of retaining walls security concrete walk way and green house construction at the US Embassy, Pani Pokhari.	1995
15	Design, detailed construction drawings, and complete Project management of dismantling existing load bearing wall and fixing the I beams including ground floor interior works at the American Ambassador's Residence, Kamal Kunj (Design and construction drawings had been approved by Foreign Building Office, Washington).	1995
16	Design, detailed construction drawings, and complete Project management of Interior finishing partitions false ceiling, painting works including electrical and telecommunication network for Trade Promotion Center in D.C.T.U. Building at Lalitpur.	1995
17	Design, detailed construction drawings, and complete Project Management of Landscaping, parking and drive area concrete paving (about 850 m3 of concrete) stone masonry and compound light up grading including painting of existing building, store/Drivers block extension and installation of Anti-Ram Bollard system at the U.S. Embassy Chancery premises, Kathmandu.	1999
18	Design and complete Project management of concrete paved Tennis Court (2 nos.) for American Mission Association, Phoradurbar.	1998
19	Design, detailed construction drawings, and complete Project management of Overflow parking area concrete paving at phoradurbar, U.S. Embassy, Kathmandu.	1998
20	Design, detailed construction drawings, and complete Project management of Marble lying in living room and dining hall, store building renovation and Garden walk way construction at U.S. Ambassador's Residence, Kamal Kunj, Kathmandu.	1995

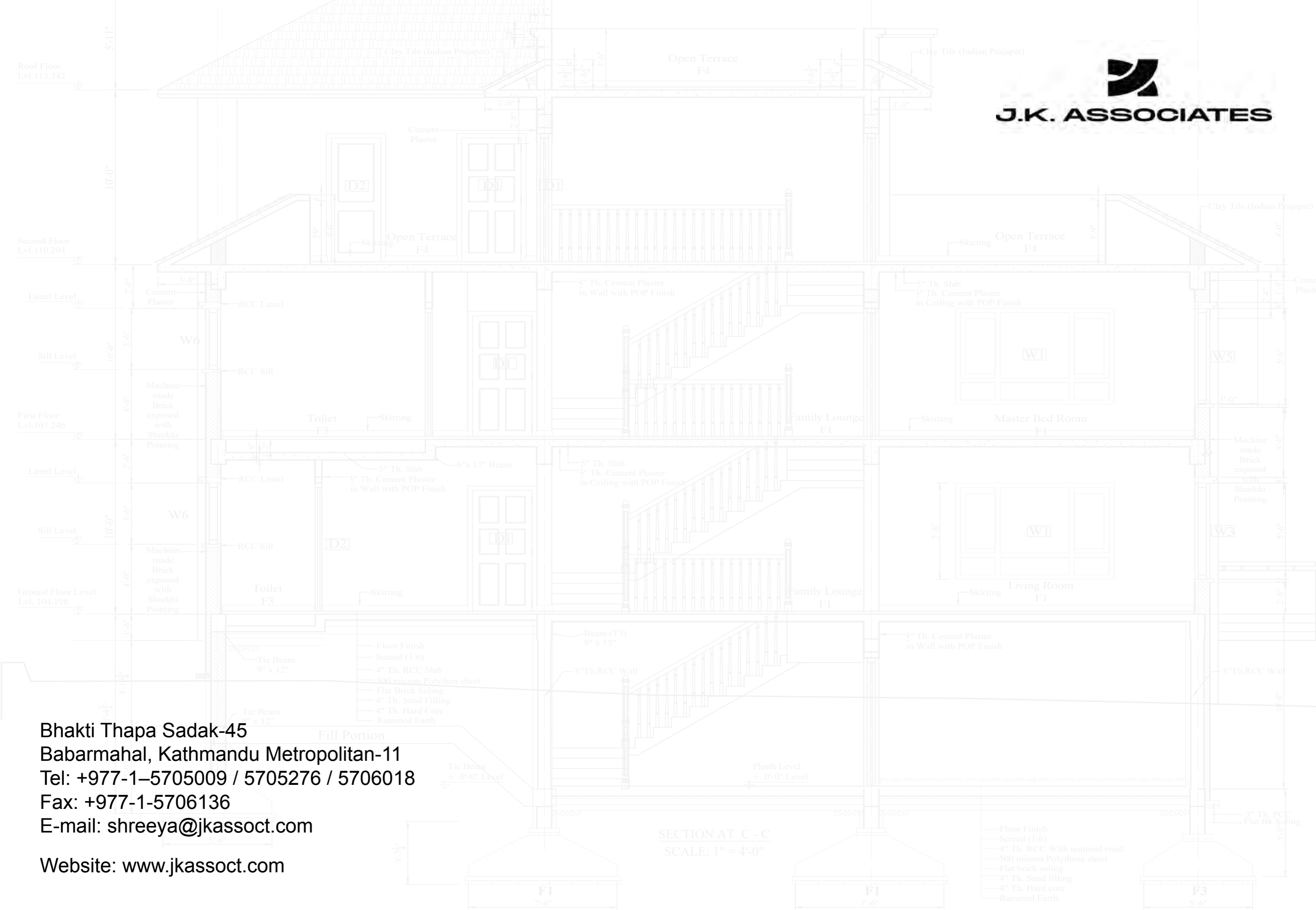
21	Design, detailed construction drawings, and complete Project management of Toilet Renovation at the U.S. Embassy, Chancery Office building.	1995
22	Project Management and build drawings for U.S. the Government owned property in Kathmandu valley, including land & building.	1999
23	Design, detailed construction drawings, and complete Project management of USIS Testing center building.	1999
24	Detailed design and project management for Electrical system upgrading project Phase-I and Phase - II at phora compound, U.S. Embassy (design and construction drawings had been approved by Foreign Building Office, Washington DC.)	1999
25	Detailed designs, construction drawings and complete project management of design build Warehouse Project at Phora compound. (Design and construction drawings had been approved by Foreign Building Office, Washington DC)	1999
26	Design, detailed construction drawings, and complete project management Related Civil and Electrical works for V-sat antenna installation at the U.S. Embassy, Kathmandu.	1999
27	Design and Project Management work for Primary Transformer Installation at the US chancery compound. (Design and construction drawings had been approved by Foreign Building Office, Washington DC.)	2000
28	Design, detailed construction drawings, and complete project management of Well enclosure and improved project at Brahma Cottage American Embassy, Kathmandu. (Design and construction drawings had been approved by Foreign Building Office, Washington DC)	2000
29	Design, detailed construction drawings, and complete project management of Cafeteria Building for Lincoln School	2000
30	Design, detailed construction drawings, and complete project management of Associated civil works RCC (water tank) with a capacity of 2,50,000 liter for a drilling project at Phoradurbar, including an aeration tower and paving work, U.S. Embassy, Kathmandu. (Design and construction drawings approved by Foreign Building Office, Washington DC.)	2001
31	Design, detailed construction drawings, and complete project management of Water distribution at Phoradurbar compound with 100 mm. diameter distribution pipe lines, fire hydrant facilities and connecting a Davey Booster Pump for distribution system including inspection chambers, pump-house, U.S. Embassy, Kathmandu. (Design and construction drawings approved by Foreign Building Office, Washington DC.)	2001
32	Design, detailed construction drawings, and complete project management of Safe heaven storage building for US Mission Association at Phora Compound, Kathmandu.	2001
33	Design, detailed construction drawings, and complete project management of Renovation of Compound Access Control (CAC) Building at the U.S. Embassy, Kathmandu.	2001
34	Design, detailed construction drawings, and Renovation of complete project management of Ambassador's Residence for the U.S. Embassy, Kathmandu.	2001
35	Design, detailed construction drawings, and complete project management of Security Boundary Wall Construction for USAID.	2001
36	Design, detailed construction drawings, and complete project management of Extension of the Marine House at the U.S. Embassy, Kathmandu.	2001
37	Detailed construction drawings, and complete project management of KIA Show Room and Service Center at Tinkune.	2002
38	Seismic Assessment and project management for Residential Building Rented by USAID, Rabi Bhawan.	2002
39	Design, detailed construction drawings, and complete project management of Landscaping works for Lincoln School on Leased Ground.	2002
40	Design, detailed construction drawings, and complete project management of Landscaping Works at the US Ambassador's Residence at Kamal Kunj.	2002
41	Design, detailed construction drawings, and complete project management of Supervision for Admin Office Re-modeling Project at the U.S. Embassy, Kathmandu.	2002

COMPLETED PROJECTS



42	Detailed construction drawings, and complete project management of Construction works of OFDA Room at USAID.	2002
43	Contract administration including project management, Supervision, site visit, quality and control Electrical Upgrading Project Phase- I & II at Phoradurbar Compound, US Embassy, Nepal.	2002
44	Design of V-sat Antenna supporting structure above ground, considering the seismic and wind load, detailed construction drawings and complete project management co-coordinating with TELNOR company of Norway on the premises of UNICEF Building, Lainchor, Kathmandu.	2002
45	Design and detailed construction drawings and project management for a Hotel and apartment complex in Q/Tamdja 1, Bafoussam, Cameroon, for Mr Diake Tagni.	2002
46	Authorized valuator for m/s Nepal SBI bank Ltd. And completed the valuation of Hotels, Resorts, commercial complexes, land and residential buildings.	2002
47	Seismic Assessment of Residential Building to be leased by the US Embassy, Kathmandu	2002
48	Design, detail construction drawings of Residential Building at Tangal (Krimo House)	2003
49	Design, detail construction drawings and complete project management of Residential building for Mrs. Madhuri Karki at Bhatbhateni. (Pikhuwa House)	2003
50	Design, detail construction drawings and complete project management of Residential building for Mr. Dambar Singh Karki at Bhatbhateni. (Akhwa House)	2003
51	Design, detail construction drawings and complete project management of Guard plus visitor's room at the Canadian Embassy.	2003
52	Design, detail construction drawings and complete project management of Garage and car shed and roof renovation work at the French Embassy.	2003
53	Design, detail construction drawings and complete project management of Residential building for Mrs. Prama Rajya Laxmi Shah at Madhuban, Chundevi.	2004
54	Design, detail construction drawings and complete project management of Residential building for Mr. Kendra Bikram Shah at Madhuban, Chundevi.	2004
55	Design, detail construction drawings and complete project management of New and Renovation works for La' Soon Restaurant, Lalitpur	2004
56	Design, detail construction drawings and complete project management of Humanitarian Assistance Road Project, Gorkha District, Nepal.	2006
57	Design, detail construction drawings and complete project management of Mission Warehouse Building Project, Phoradurbar Compound, US Embassy, Nepal	2006
58	Design, detail construction drawings and complete project management of renovation for residential building for Ang Chanda Sherpa at Baluwatar, Kathmandu.	2006
59	Design, detail construction drawings and complete project management of residential building construction of Mr. Arun Kumar K.C. at Chundevi, Kathmandu.	2006
60	Design, detail construction drawings and complete project management of Physical Security Upgrade Project at the US Consulate, Naha, Okinawa, Japan	2007
61	Design, detail construction drawings of Security upgraded items for DS Compliance at Phora durbar compound, US Embassy, Nepal	2007
62	Design, detail construction drawings and complete project management of Residential building for Mr. Pradip Rana at Budhanilkantha, Kathmandu.	2007
63	Design, detail construction drawings and complete project management of CL Apartment for Mr. Satish C. Shrestha at Panipokhari, Kathmandu.	2008

64	Design, detail construction drawings and project management of Residential building for Mr. Gaurav SJB Rana at Babarmahal, Kathmandu.	2009
65	Project Management Architectural and Engineering design and construction drawings for doors/window replacement, Porte Cochere, staff quarters and seismic retrofit construct of main building at the US Ambassador's residence "Kamalkunj", Kamaladi, Kathmandu.	2009
66	Project Management and Supervision of Renovation and Extension work for the World Bank at Yak & Yeti Complex, Kathmandu.	2010
67	Project Management Design, construction drawings of Physical Security Upgrade Project at the US Embassy, Copenhagen, Denmark	2010
68	Design, detail construction drawings and complete project management of Jyotishree building complex Jyotishree Pvt. Ltd at Babarmahal, Kathmandu.	2011
69	Design, detail construction drawings of CMR Seismic Strengthening Project at the US Ambassador's Residence, Kamalkunj, Kathmandu.	2012
70	Design, detail construction drawings and Project Management of Meridian School including Access road and site development works at Tokha, Kathmandu	2013
71	Design, detail construction drawings of Pragyashree Niwas at Budhanilkanth, Kathmandu	2014
72	Design, detail construction drawings for Residence of Ms. Vijaya Laxmi Rana at Maharjung, Kathmandu.	2014
73	Design, detail construction drawings of Idul Khairiya College of Medical Science at Gaur-11, Rauthat, Nepal	2015
74	Design, detail construction drawings of NRNA Headquarters at Baluwatar, Kathmandu	2016
75	Design, detail construction drawings of Rupy's International School, Bhaishapati, Lalitpur	2017
76	Design development drawings of Namu Buddha Resort including Landscape at Namu Buddha,	2018
77	Design detail construction drawings and Construction Supervision of Jagadamba Corporate building at Naxal, Kathmandu.	2018
78	Design detail construction drawings of Jagadamba Motor Showroom at Naxal, Kathmandu.	2019
79	Design detail construction drawings and Construction Supervision of Pani Pokhari Apartments at Pani Pokhari, Kathmandu.	2019
80	Detailed Project Report submitted to the Government of Nepal for development of New Town Project (Smart City); in a joint venture with renowned Architect firm Helin & Co. (Finland).	2019
81	Design detail construction drawings and Construction Supervision of Service Apartment for Siddhi Lal Shrestha at Bhaishapati, Lalitpur.	2019-2020
82	Design and Construction Supervision of the International Accommodation Block at BPTOC, Panchkhal, Nepal	2019
83	Design and Construction Supervision of Morang Birthing Center at Biratnagar, Nepal	2021
84	Design and Construction Supervision of Commercial Building for Mr. Gopal Man Joshi at Naxal, Kathmandu	2021



Bhakti Thapa Sadak-45
Babarmahal, Kathmandu Metropolitan-11
Tel: +977-1-5705009 / 5705276 / 5706018
Fax: +977-1-5706136
E-mail: shreeya@jkassoct.com
Website: www.jkassoct.com